

MYILLY POINT PRECINCT
REPORT TO GOVERNMENT
CONCEPT DESIGN

February 2018



DOCUMENT INTRODUCTION

This report and its concept for site development, which respond to the findings of stakeholder and community engagement.

This report, projects opportunities for integrated site development at Myilly Point Precinct of landscape, architecture and interpretive exhibition are presented diagrammatically through:

- precinct-connected site plans
- explanatory diagrams and summary schedules
- 3-d views

A project cost report is appended.

The above is contained within this 'Volume 1' report

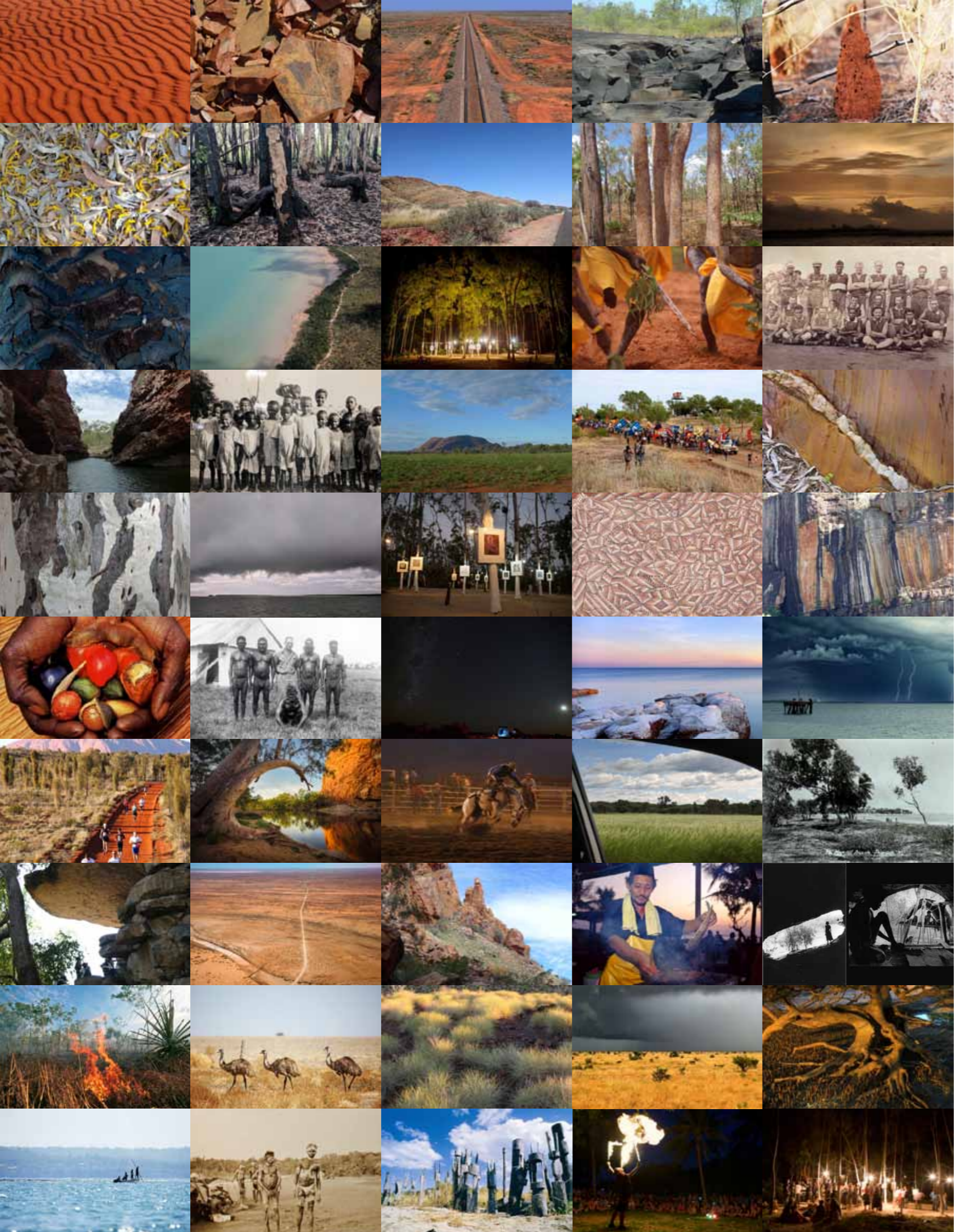
Project economics and governance are discussed in a separate 'Volume 2' report prepared by MacroPlan Dimasi.

In this report the project site (with its diverse attendant activity) is referred to as Myilly Point Precinct.

ACKNOWLEDGEMENT

The authors of this report acknowledge the Aboriginal peoples of Australia as the custodians of these lands, oceans and waterways, and recognise the Larrakia as the Traditional Owners of the site to which this work pertains.

CONTENTS



CONCEPT DESIGN

1.	Executive Summary	4
2.	Introduction	5
3.	Activation	6
4.	Site & Urban Planning	8
5.	Landscape	9
6.	Architecture Areas Schedule	10
7.	Exhibition	11
8.	Servicing	13
9.	Transport	14
10.	Concept Drawings Site Masterplan Functional Areas Plans Views Landscape Sections	15
11.	Site Dynamics Diagrams	48

ABBREVIATIONS	
NTG	Northern Territory Government
RFT	Request For Tender document (for this consultancy)

1. EXECUTIVE SUMMARY

The concept for Myilly Point Precinct is couched in a 'precinct approach' at 2 levels:

- Through connectivity to the greater Myilly Point/ Cullen Bay and Mindil parklands precincts
- Full activation of the old Hospital site for diverse community purpose

Concepts presented in this report fulfil the ambitions of the developed brief in delivering:

- A site broadly accessible for diverse community use;
- A site that is activated for 16 hours a day, in the Dry and in the Wet, that is celebratory of the seasons, the city, the Territory;
- An extension to Darwin's Mindil Parklands and George Brown Botanic Gardens;
- Park settings for festivals and events, for socialising, recreation places, and for finding more quiet and intimate spaces;
- Opportunities for Food and Beverage outlets – and for picnicking;
- Opportunities for Arts-based retail outlets;
- CBD and Cullen Bay connections, including within the City Deal proposal context;
- An Exhibition space that complements and builds connections and partnerships with city-wide museums and galleries – and the NT Governments Arts Trail ambition;
- A 'Living- Working Museum' that integrates landscape, architecture and exhibition;
- A place that connects widely with the Territory;
- A place, inside and out that is rich in story-telling;
- Integrating Kahlin Compound and Stolen Generations interpretive opportunities and memorials;
- Acknowledging and embracing Larrakia connection to the City Lands and Sea;
- A place to look out from, day, sunset and night;
- A world-class, iconic building and integrated and adaptable site development;
- A 'green' site development exemplar; and an
- Opportunity and master-planning for synergistic site development

Project economics reporting by MacroPlan Dimasi adopts a Territory-wide context for a quadruple bottom-line assessment of the project potential, but, conservatively, economics modelling is only carried out for the Museum site elements themselves.

Throughout project development, MacroPlan Dimasi's reporting to economic parameters and potential has inspired site development content and concepts. In turn, their report in this project phase is supportive of the presented project's economic potential.

As directed by NTG, the MacroPlan Dimasi report also incorporates research into alternative governance models to underpin detailed development and sustainable, holistic, responsive operation of the site.

[Refer Volume 2 for the Macroplan Dimasi report.]

2. INTRODUCTION

Myilly Point Precinct is first and foremost about reflecting community pride, to authentically respond inclusively to the Territory lifestyle and its culture and traditions. It will offer recreation, entertainment, culture and education side by side.

Myilly Point Precinct, through its authenticity, will be most deeply attractive to interstate and international visitors, and remain a loved drawcard for local visitors as well as participants and material custodians.

Myilly Point Precinct will host an iconic exhibition space and interpretive landscape that tells the stories of the world's longest continuous (65,000 years) culture – stories that are a deep background to a palimpsest – an over-laying – of more recent, inevitable intertwining stories. The resultant weave will conjure the past and the future. Through the extraordinary past of the Territory, local stories will inevitably serve redefine visitors' view of Australia, its 'creation', structures and regional connections. Interpretative themes of the Territory will inevitably illuminate contemporary national ones, promote debate near and wide, and invoke personal reflection.

Myilly Point Precinct will not be an exhibition space in the staid traditional sense, nor will its content remain static: it is conceived to be a Living-Working exhibition space, in real time engagingly reaching out and drawing in from across the Territory. It will demand national and international referencing. It will demand re-visitation. It will promote Territory-wide tourism.

"This Site will be more than a place around an exhibition space: it will become a cultural and community host, a landmark site, profound in meaning and joyous in public activity: a site with many destinations, many purposes. Through its diverse program it will add significantly to the revitalisation of the City, and build the Territory economy widely and sensitively. Its cornerstone ambition is to be: Looking after City, Looking after Country."

3. ACTIVATION

To achieve economic success – in terms of quantum return and Territory spread – as well as positive social, cultural and environmental impact for the Myilly Point Precinct, if site development were to:

- Deliver diverse cultural destinations;
- Respond *authentically and actively* to both enduring and newer cultural traditions of the Territory;
- Be considerate and accommodating of all sectors of Territory society;
- Safely offer 16 hour site activation, for the Wet and the Dry;
- Change and refresh its offer with seasons and over time;
- Promote incidental and recreational Community activity, including for families, children, youth;
- Afford adaptability to accommodate diverse festivals and public and social events;
- Provide diverse Food and Beverage and appropriate Arts-based retail outlets; and
- Be master-planned to accommodate synergistic research, educative and commercial partnerships.

An authentic, Community-responsive and broadly activated outcome will deliver not only Community benefit in a 'quadruple bottom-line' (economic, social, cultural and environmental) sense, but drive increasing interstate and international visitation and deeper economic success.

Accordingly a richly adaptive, community-purpose Myilly Point Precinct Parkland has been conceived; and this Parkland is sheltered and nurtured by a 'Living-Working exhibition space, the Myilly Point Precinct.

The Parkland setting with both open and more intimate landscape space is the site canvas for diverse, *repeat* public and social activity, spreading across the whole site and containing interpretation of historic site uses, to serve as reflective and healing spaces as well an extension of the exhibition space.

The site-bridging, grandly scaled Myilly Point Precinct Undercroft ('Welcome Place') offers, intense and deeply-shaded *adaptive use*, including to support, within and beyond:

- Festivals and events
- Pop-ups, buskers, graffiti artists, community messaging
- Community celebrations
- Gathering (including groups getting organised for the exhibition space/ site)
- External exhibitions
- Welcoming/ storytelling
- Promotions of Territory art and culture (including making and demonstrating)
- Music
- Eating, drinking
- Just keeping cool (with water ponds and misting)

The Undercroft can also be a marketplace anchor, with adjacent landscape fringes forming a 'tropical Agora'. This setting can perhaps enable Myilly Point Precinct to complement the nearby (and highly touristed) Mindil Markets experience – in relation to art, culture, food.

The elevated exhibition space can integrate screens/ projection surfaces for outdoor cinema and diverse media.

Diverse Food and Beverage options are proposed, as a:

- *Destination venue* (Sunset Bar & Restaurant);
- *Casual venue* (the Parklands connected Undercroft al fresco cafe – good for joggers and dog-walkers, as well as before/ after site visitation); and a
- *Exhibition venue* (the Myilly Point Precinct Experience Café, as a pause within the exhibition journey/ function space)

Myilly Point Precinct's Agora or Food and Beverage base(s) can also be a catering base for a Parklands 'dining under the stars'.

Picnicking options are woven into Parklands fringes and sited close to car and tour bus parking.

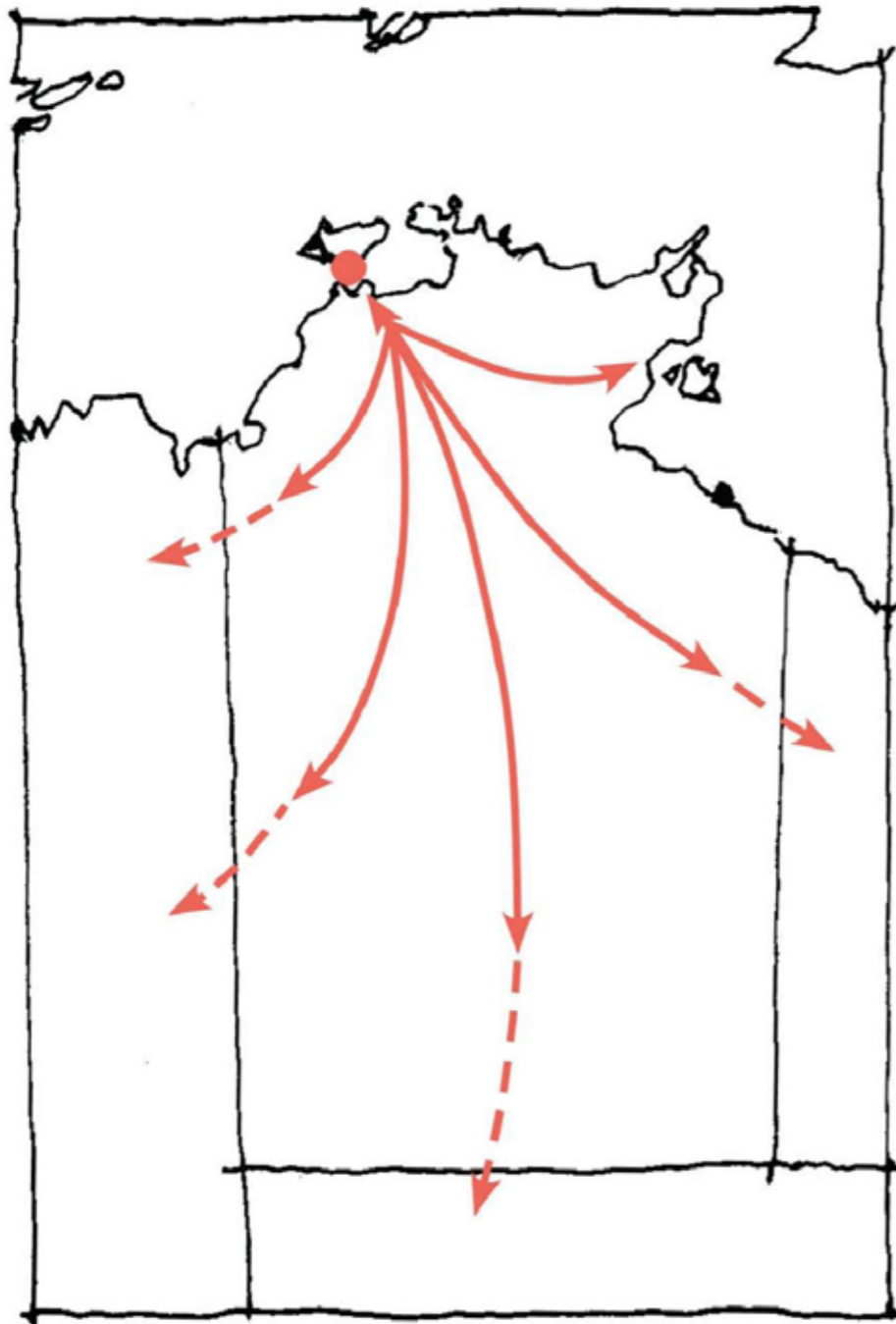
The Myilly Point Precinct and its interpretive site development is devised to engage visitors not only with the stories of the Territory, but with the stories of this site – and those stories ripple out and travel beyond, connecting with sea and land outlooks and inherent Larrakia songlines...

- The elevated exhibition space itself offers 270 degree City, Parklands and Coastline views.
- A separate lookout to 12 storeys height offers public view of all Darwin Harbour and surrounds (a rather exciting place to be during the Lightning Festival).
- A Sunset Bar & Restaurant is located sunset-side for both open and sheltered all year round outlook.
- A Sunset Promenade is a site destination overlaying with Harbour / Cox Peninsula views.

Development of the Myilly Point Precinct sits within the NT Government's Arts Trail initiative. Indeed, it can be a 'hub' or 'bureau' for this initiative, networking with existing Territory museums, galleries and arts centres – and the proposed National Indigenous Art Museum in Alice Springs and State Square Fine Arts Gallery – and so, in yet another way, bringing the Territory to this site.

Partnerships with MAGNT, NT Archives, NT Library and CDU can obviate collection tasks for the Myilly Point Precinct – and also offer significant and compounding networking possibilities. In return, exhibition-particular facilities are expected to be made available to those institutions. Interstate and international cultural facility and academic partnerships can strengthen the Myilly Point Precinct's profile and efficiencies – and potentially lead to synergistic development of on-site Research/ Education facilities.

To accommodate this high degree of activation, it is recommended that the Governance structure will be expert, inclusive and responsive. Site promotion and operation will need to richly develop and harness digital platforms and channels – which, aside from national and global reach, will also connect 'in real time' locally, Territory-wide – in turn, underpinning Myilly Point Precinct's authenticity.



CITY CENTRES TRANSFORMED

- NT Government plans to transform city centres.
- 10-year-plan to bring the Darwin CBD to life, \$120 million investment.
- Includes Myilly Point Precinct.



4. SITE & URBAN PLANNING

Planning

Site development responds to developed brief ambitions to:

- Link safely and efficiently to urban vehicular, bicycle and pedestrian networks, including to well accommodate public and tourism transport;
- Link with the greater Myilly Point precinct and Mindil Parklands;
- Buffer to residential neighbours; and
- Masterplan for synergistic future potential partnerships and expansion.

Site planning takes advantage of prospects to coastlines and Mindil Parklands.

Site elements are located to enable significant permeability, and are not set across the City's primary north-west/ south-east breeze paths. The Museum is elevated to enable breeze penetration across the site.

Sunset views are honoured in landscape and architectural planning.

Water bodies and deep shade through landscape and architecture are integrated in site planning to mitigate site and precinct heat.

Site history

Mapped historic sites (Kahlin Compound and the Old Hospital) have been respected and reserved as landscape space – and their historic patterns used to generate new patterns within the developed site landscape.

The former Myilly point escarpment to the site's west, 'homogenised' through Cullen Bay earthworks development, is to be interpreted and integrated in site landscape planning.

Site levels and stormwater control

Within the concept framework, site levels are to be set and earthworks managed to ensure no nett export or import of base material.

Natural site levels are proposed to be adjusted to more broadly disperse site surface water flow, which presently concentrates water to the western portion off the site (and neighbouring properties). Stormwater will be significantly detained on site and returned to the water table, also achieving seasonal landscape modulation and encouraging biodiversity.

5. LANDSCAPE

Welcome

First impressions matter. A Larrakia welcome to Country marks arrival to this place, distinguished by a journey from the urban realm into an evocative and immersive landscape.

This threshold, within a shaded, beautiful and enveloping canopy of local flora, will greet visitors and host a range of movement paths.

Visitors to the exhibition space, entering into this remarkable place, will journey along braided pathways that weave through the landscape, inviting a slower pace, allowing discovery, reflection and conveying that *this is a different space to the city*.

Community

The proposed Myilly Point Precinct is founded within a green stage for community life, a people's park, a great park, distinctly of Darwin and animated by its diverse people.

Bold bamboo forest, Savannah plains, Pandanus walks and monsoon vine forests could all be an accenting part of a new parkland experience; and one that communicates the Larrakia seasons and rhythms of its landscape.

It would also be a park simply conceived, open lawns for events, spaces for ceremony, shaded walks, places to explore and places that invite participation in community life. A park that comes alive in the evening, animated by cinema in the trees, markets, picnics, music, food vans, pop ups, sculpture and art fairs. A destination devoted to new vistas at sunsets and the night sky. A fabulous evening and night time experience, a star park, with moody and evocative lighting enhancing the experience.

A park host to the Territory's best play space: a new community destination that resonates with the past and the children of this place, Larrakia children, Chinese children of the market gardens, stolen generations children, those of the Kahlin Compound and children born at the Darwin Hospital – a play environment that connects to the next generation with their own stories to tell. A fun engaging wild sculpture of play, nature based, with themes of the Territory, perhaps, over-scaled termite mounds, hovering birds' nests, mythic animals...

A park that uses water in a manner sensitive to the climatic extremes of the Top End: animating the site in unexpected ways in rain events, used to foster new microclimates, and as a playful feature, that cools and creates sensory effects.

Storytelling

Designed landscapes can be powerful experiences, connecting to people emotionally and telling important stories. As the Myilly Point Precinct's exhibitions will express the truly epic scope of the Territory story, so too will the designed landscape that is intertwined within and around it. The uniqueness of the Territory, the diversity of its terrains, its extreme contrasts and Aboriginal culture's unbreakable link with land are all able to be represented.

In detail it will speak of the greater Territory beyond this place and inspire visitors to explore into country.

As an interpretive landscape it will communicate its message through sensory experiences – visual, aural and tactile. The opportunities are many. It may communicate that this is a stone site, a place of important ochres, or a sand and salt garden evoking the distinct colours of the Territory, or a place where visitors experience the Territory's seasonal abundance of water and also its scarcity, or a cacophony of sounds characteristic of the Top End versus the beautiful silence of the Centre. It may represent the striking colours, forms and patterns of

the Red Centre in a sculpted manner or link visitors to fire stories, and bush tucker displays, and demonstrate the importance of Indigenous flora as resources for implements, for art and cultural purpose.

Evoking Site History

This place, with its many histories, will be represented and commemorated appropriately as part of the Myilly Point Precinct. In particular, in landscape, there is an opportunity to develop and integrate a Kahlin Compound Memorial Site, a place to tell the truth of what happened here, reveal the past and provide a setting for appropriate commemoration and reflection.

Alive

Importantly, as designed, this will be a setting that is real, authentic, working and participatory. Perhaps located centrally, where visitors will naturally gather and orientate as part of the Myilly Point Precinct's entry will be a 'clearing' or 'agora' or both, defined by activities, a sense of chatter, and host to making, demonstrations, yaling (dancing) grounds, spaces for markets, music and workshops. A setting that is flexible, dynamic, ever-changing, and one that communicates that through the world's oldest continuous culture, as well as those of more recent peoples, this place is richly alive.

Environmental

Reduced building footprint in favour of landscape is the key step in mitigating heat on the Myilly Point Precinct site and its adjacencies.

Shade trees in particular are proposed as critical (and cost-effective) infrastructure to reduce urban temperatures, and in the presented concepts are utilised extensively to create shaded useable spaces. Site development also seeks to limit exposed hard paved surfaces, to reduce site radiant heat.

This strategy is enhanced with the sensitive use of water, its capture and reuse, and the incorporation of wet surfaces, mists and shaded water bodies as evaporative cooling systems.

Landscape planning in detail will harness passive cooling by harnessing prevailing winds.

6. ARCHITECTURE

Myilly Point Precinct is to be a landmark building, imposing on approach and from the air – yet also subtle, dynamic and changing with the seasons.

It will celebrate the textures of the Territory, and its makers.

It will wholeheartedly respond to the climate of the Top End, and integrate the notions of Ecologically Sustainable Development, and be devised to age gracefully.

It will integrate the Myilly Point Precinct's functions with the opportunities of greater site development. It will be accessible to all. It will be rationally and discretely serviced.

It will also have a fitting poetry...

Welcome Place

Instead of an immense object on the ground, the Exhibition Building has been allowed to hover, creating a huge shaded place beneath. This shade, or shelter in the Wet, becomes the welcome place for the Myilly Point Precinct and a focal point for the whole site – for everyone.

Gateway

Instead of the building dividing the site up somehow, this 'shade place' becomes a gateway linking all corners of the site in confluence. And instead of shading becoming a big problem to be solved, the hovering of the building means that the whole of the building delivers shade. And instead of shade being a kind of attachment, the whole building is itself a kind of shadow, more like a natural formation, an outcrop, or a rock shelter.

Bridge

The bridge-like building comes to ground at each end – at one end to provide back-of-house and deliveries, and the other as an ephemerally glazed entry. Beneath the bridge sits an alfresco café in the form of a mounded space, opening inward to a multi-level atrium through the building, and connecting with and open to Parklands each side. Way-up, above the roof, is a dome with filigreed screening.

Serpentine

Rising up through the entry foyer, a serpentine stair and transparent lifts move patrons to elevated exhibition spaces. Serpentine movement continues to form a journey through and between galleries. Closed spaces juxtapose with more open.

Oculus

In the middle of this floor is a large oculus void through which it is possible to look both down to the active Welcome Place below and up to the sky (a sky of very diverse moods). Mounted around the circumference of this void, and linking to ponds below, is a water spray creating a cool cloud of mist to the Welcome Place below, as if a kind of continuous smoke.

Breakout

Perimeter movement galleries offer outlook through the tempering filigree of the building's Territory-pattern screens – and breakout for visitors to rest or regroup.

Lookout

From the Gallery level, as well as directly from ground (and after hours) it is possible to directly access the Lookout Tower, which by lift and spiral stair provides access to the Sunset Bar and Restaurant/ Function space. This space offers sheltered year-round viewing on a mezzanine carved from the building form. From there, we can wind a further 8-storeys up to the Lookout, with spectacular views to city and parklands and near and far coastlines – and, in the Build-up/ Wet, Darwin's lightning storms.

Face

The façade up there – the outward face – of the building will be a chimera that combines sun, daylighting control and cyclone screen systems, and integrates surfaces for projection and light deflection. A solar control program can provide for tracking of sun-control fins throughout the day. By night: a shimmery striated lantern. A dynamic (and hard-working) face – with a shifting Territory filigree.

This is a recessive face – not shiny, a dark face, woven of deep-dark steel, of rust, of greyed and burnt timber, of polished ironwood. Beneath, grounding, holding up this weave are the earths and ochres of the Territory. It is the earth that we walk through and over (in comforting shadow).

Canvas

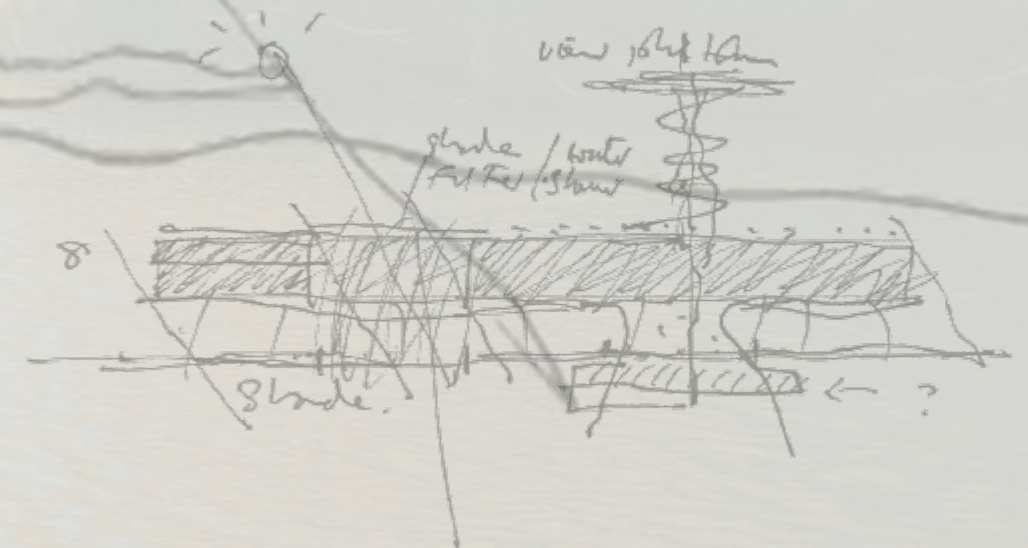
The shaped soffit (ceiling) of the Welcome Place mirrors the terrain of the landscape below. Its facets provide a canvas for local artists, and so, here, begins a community palimpsest, layering with time.

Organic

Overall, the building has been designed as a landscape building, organic in form, centrally placed within and integrated with its site, taking advantage of prospect, and in scale with its (developing) urban context.

Embrace

Conceptually, the Myilly Point Precinct seeks to transcend the idea of 'design', or even of 'architecture itself', to acknowledge much larger forces and to embrace the mysteries that underlie the strange but wonderful stories of the Territory. Is it an ark, a big dilly bag, holding, embracing a whole lot of stories, and many reaching a very long way back...?



7. EXHIBITION

Planning

The Myilly Point Precinct is conceived as an indoor-outdoor experience. Storytelling will be throughout the site, and, from well-considered vantage points, beyond.

Welcoming spaces are woven in as transitions to both site and exhibition space. Beginning with a Larrakia welcome, it is proposed that visitors are seem to be welcomed by all peoples of the Territory: *"We welcome you to Our Place"*.

Landscape will be interpretive of Territory landscapes and resource-use of trees and plants. It will also embrace the former Kahlin Compound (and its Old Darwin Hospital overlay) and site-connected Larrakia stories; and these interpretive areas are to be flanked by a Keeping Place and the (National) Centre of the Stolen Generation. This landscape setting will be a space for learning, reflection and healing, as well as to accommodate focal 'cultural grounds' for gathering, dancing and wider celebration.

The Myilly Point Precinct Undercroft offers immensely active, temporary space for particular storytelling or Community engagement through live/ impromptu street art, demonstrating and messaging (physically and digitally) – to accompany special exhibitions/ Myilly Point Precinct events – or not. It is also the gathering place and transition to exhibition entry.

Journey through the exhibition galleries is as linear/ non-linear as visitors choose, and always accompanied by outlook galleries as pause points.

There are (changing) introductory galleries that leads to 5 Themed Galleries, each building a palimpsest of storytelling, with ancient beginnings and more contemporary happenings overlaying each theme, and offering diverse perspectives to build respectful learning. Independently or between galleries, visitors can follow/ return to a 'songline journey' (a summarising journey across the stories of all Territory cultures).

A Temporary Exhibition Gallery is sited to be able to operate either independently of the themed exhibition experience, or to extend that experience. This and all galleries are proportioned and serviced to be adaptable to diverse purpose.

A Myilly Point Precinct Experience Café, as well as its in-hours purpose, can engage with the Museum exhibition out-of-hours, using the Songlines Journey as a setting for characterful/ culturally/ educationally focussed functions/ events.

The design and execution of the exhibitions will be of International standard, and its research, writing and layers and interpretation is proposed to be thorough and representative of the whole of the Territory and its national and near-Asian contexts. Most importantly, it will be deeply engaging of local input, incorporating diverse perspectives: an exhibition space of the Northern Territory – *'Our Place'*.

The creation of the exhibition and interpretive material indoors and out is expected to demand Territory-wide making, and on-going as exhibition content refreshes and extends.

The Visitor Experience

As visitors ascend to galleries above, there is a welcoming of visitors by the Territory's contemporary diversity. At the gallery level arrival is within an active, 'living' space. Along the way and here interactive installations provide an opportunity for the visitor to add his or her likeness or voice to the unfolding volume of the Myilly Point Precinct.

A central Stories of the Territory exhibition acts as an introduction and a hub, from which, in a spoke-like arrangement, visitors then explore a series of thematic galleries. These use broad but Territory-specific themes to organise a dialogue between the historical and contemporary experiences of Aborigines and more recent arrivals to this Place.

Sensitive topics will be broached, not least the site-specific Kahlin story, an emblematic touchpoint for much of the Territory's contact history, with the aim of reconciliation and understanding. Sightlines and interpretive connections to the surrounding environment and beyond will be sought.

Inside each gallery, we will carefully consider all available means to convey a singular experience that is memorable, dramatic, and meaningful. Key collections items (including significant artefacts, documents, images, and audio-visual information) will be embedded within a long, threaded, songline motif that serves as an orientation device to remind visitors 'where they are in the story'. Anchor 'mega-objects', large media-based displays, and direct physical connections to the surrounding environment can provide 'wow' moments. The languages and sounds, materials and textures, and art and imagery of the Territory will provide an authentic Sense of Place.

This will be a 'Living-Working Exhibition'. Three particular spaces that particularly give voice to contemporary residents will be:

- People of the Northern Territory, where visitors meet – virtually – representations of contemporary Territorians;
- Stories of the Northern Territory Gallery, which acts as an introduction to the thematic galleries, and can include a rotating roster of stories important to Territorians; and
- Keeping Place(s) with restricted access to secret/ sacred and repatriated cultural materials and remains.

The Myilly Point Precinct is to provide world-class exhibitions and visitor experiences within permanent galleries, community spaces, and temporary exhibition spaces – indoors and out. Experiences will be immersive, tactile and interactive – with opportunity for reflection.

We see great potential for employing new media and digital interpretation techniques across the project, to create an experience that is ever-changing from visit to visit, and one that is simple for the institution to update as new content and stories become relevant. As well as live experiences within the Myilly Point Precinct, there is great potential for live connections to activities beyond this site.

Key narrative structures and gallery precis that have been developed alongside concept design development are described opposite.

Narrative Structure

“In RAA’s philosophy, content leads design and informs all aspects of what we do. Our interdisciplinary teams privilege narrative storytelling, as not just the driving force of our creative vision, but also as a principle shaping our working methodology.”

Our holistic approach to storytelling means that we contemplate the balance and diversity of exhibition techniques and diverse content types. We also take into account the way stories unfold through connected spaces and across diverse mediums. This allows us to evaluate not just what the story of a space or exhibit could be, but the most effecting and engaging way to tell it. We then carefully consider all available means to convey a singular experience that is memorable, dramatic, and meaningful.” RAA (Consultant Exhibition Designer)

At the Myilly Point Precinct, content assets including artefacts, documents, images, and audio-visual information will be integral to exhibition design, while large media-based displays can also provide shared experiences that tie together thematic threads. There is no single aesthetic formula or organising principle. The emerging design will be governed by the story, the needs of the objects, the tone of the space, and the varying role of the diverse content types within the storyline – considered on a case-by-case basis always with an eye to a connected visitor experience.

Galleries précis

1. People of the Northern Territory: Gathering Space

A lobby-like large, bright social space overlooking an atrium presents a celebratory welcome and from all of the people of the Territory – including some famous faces. It provides an overarching inclusive portrait of its contemporary diversity, and may feature a user-generated media experience. Sculptural elements will engage the void drawing visitors up from the entry below. This space may use large-scale media, and can support performances and ceremony.

2. Stories of the Territory: Introduction to the Permanent Exhibition

This centrally located exhibition has connections to the living elements (water, sky, flora) in the Museum entry void. A flexible armature provides for an updateable changing roster of historical and contemporary topics. The exhibition may focus on archetypal elements of NT life, ranging from music and pop culture, to politicians and social movements; to sports and food. It could include personal stories from prominent living people (a footy player, a member of Yothu Yindi, a Community elder (from the Centre and the Top End), a pastoralist) as a starting point. The exhibition acts as a reference point for those coming in and out of the Themed Galleries.

3. The Songline Chronology

This is a sinuous spine that runs through the thematic galleries and provides contextual background information about the theme at hand. Text, art, photos, objects, and media can be embedded in it. The Songline forms a continuous chronological pathway, particularly useful for those with little background in the Northern Territory, linking the thematic galleries into a connected narrative experience. First time visitors seeking that total story may choose to follow the pathway, whereas other visitors may opt to short cut to specific areas.

4. Themed Galleries

These are umbrella themes that are deliberately broad ranging, open to interpretation, and able to carry stories from the many cultures of the Northern Territory. They are not organised chronologically, but may be composed of a number of key installations that exist in provocative dialogue. The galleries will be interior conditioned spaces suitable for the display of objects and presentation of media pieces.

4.1 Themed Gallery 1: Moving Through Time & Space

This is the broadest of the galleries, and acts as an introduction to the way that extended time and immense distances have shaped the Territory. Topics may include: Creation stories and songlines; Aboriginal trade routes; Macassan trade; exploration and mapping; pastoral settlement; dreams of Asian connections; overland telegraph; shipping, roads, aviation; popular culture in and of the Northern Territory.

4.2 Themed Gallery 2: Water

Water is used as a jumping off point for stories that connect natural and environmental history to human activity over time. Topics may include: deep climate change; desert, top end, and between and beyond; monsoons and floods; seasons; cyclones (Cyclone Tracy); Ngalyod (Rainbow Serpent); sea-based trade; fishing and recreation, marine environmental health, water futures.

4.3 Themed Gallery 2: Earth

This space underpins the importance of land to understanding the history of the Territory. Topics may include: Geological time; oldest continent; erosion; landform and ‘every hill has a story’; Yipirinya (caterpillar); ochre mining; mining and environment; storing bones and sacred objects; moieties, singing Country, making boundaries, sharing stories; frontier wars; war and the Territory.

4.4 Themed Gallery 4: Making a Home Here

This gallery focuses on the patterns of life in the NT, ranging from plants to animals to humans. Topics may include: Megafauna, Tasmanian tiger, crocodiles, barra and down ancient and contemporary food chains; fire stick farming; buffalo, bentang, sheep and cattle; tropical and desert agriculture; Aboriginal living patterns; ‘Looking after Country’; settling the Territory; ‘Afghan’, Chinese and Asian effort; immigration; multiculturalism; building the towns of the Northern Territory; biodiversity and ecological futures; daily life of NT residents.

4.5 Themed Gallery 5: Laws

This gallery is more politically focused, and looks at difficult – but also positive – stories of cohabitation. Topics may include: Aboriginal systems of law; Christian missions; entwinement of religion and law; colonial administration, stasis and conflicts; terra nullius; land (and sea) rights; stolen generations; Territory and Commonwealth intervention; incarceration; Uluru Statement of the Heart

5. Keeping Place(s)

A set of rooms with restricted access will allow specific Aboriginal groups with access to specific repatriated remains and viewing rooms and secret-sacred objects – perhaps temporarily stored here ahead of their final journey back to Country. Rooms will include ante spaces that will enable viewing by multiple groups and separate genders, inside and (securely) out. Smoking and ceremonial rooms and courts will also be necessary.

6. Temporary Exhibition

This gallery is sufficiently large to house traveling exhibitions. Its flexible armature allows it to be configured for a full range of exhibition types.

8. SERVICING

Back-of-house

The Myilly Point Precinct's ancillary areas are grouped discretely located and serve to buffer site activity from neighbouring residences, and with clear service access. They include for briefed areas and appropriate servicing and potential fore for simple security controls.

Green servicing strategy

An integrated ESD strategy is proposed, and integrated in the project concept.

Along with other strands of the ESD program (for managing site spoil, stormwater, biodiversity, low-embodied energy material selection, and urban heat mitigation initiatives), integrated in the project concept is a climatically appropriate architectural approach to solar passive design and low-impact green servicing.

Concept plans show centralised areas for a whole-of-site approach to green servicing – for ready servicing and future adaptability.

Cooling

Overall a strategy is proposed to reduced energy demand on air conditioning systems; and, where appropriate, to offer non-air-conditioned opportunity.

Firstly, passive thermal systems are integrated in site architecture through:

- Deep and thorough sunshading;
- Operable window systems for heat relief, including when electrical/ air con systems fail (although back to critical areas as below);
- Thermal mass, primarily in concrete slab-on-ground construction and sheathed (still massive) floors in undercroft areas; and
- Insulation and heat reflection.

For air conditioning:

1. Each site element will stand alone; and
2. Briefed areas are grouped to enable efficient zoning of air conditioning systems.

Galleries sit deeply within the building envelope to minimise energy demand in these most consumptive spaces. Movement galleries act as tempering spaces, and will receive reduced conditioned air. In turn, transitional entry spaces will again receive less cooling input.

Plant & waste management

Allocation for plant to all site elements is discretely incorporated into the site plan. Area allocations are established to include for:

- Roof-mounted solar (photovoltaic) power panels;
- Back-up battery power to critical site areas;
- Electrical, telecoms and data distribution;
- Mechanical plant;
- Water harvesting and cycling; and
- Waste management including recycling

On the roof of the Myilly Point Precinct is a huge field of solar panels taking advantage of Darwin's high sunshine hours, while at the same time shading the roof itself from the daily heat load.

(Given Darwin's wet season and the precious nature of the exhibitions a green roof has been avoided as creating an unacceptable risk of leaks.)

Composting systems to deal with Food and Beverage outputs are proposed to be integrated with a site nursery. The Nursery offers potential partnership with Larrakia Rangers and City of Darwin, and its purpose can extend for public and private purpose throughout the Myilly Point precinct and beyond.

9. TRANSPORT

Transport planning

Pedestrian & cycling connections

Conceptual site landscape development strongly reaches out to link with Darwin City Deal's proposed pedestrian and bike friendly Smith Street linear park. Continuation of this travel path past the site down to Cullen Bay is also integrated.

Sheltered cycle parks will be integrated in site development.

Metro bus stops/ 'western transport hub'

Metro buses (that travel Gilruth and Kahlin Avenues and Mitchell Street can provide ideal adjacent drop-off to the site along Lambell Terrace.

These stops can double as the proposed 'waterfront-to-waterfront' (east-west) autonomous bus, also linking a future State Square Gallery with the Myilly Point Precinct. This hub can also serve a Mindil-Fannie Bay (north-south) line, linking Bullocky and East Point (and Sunset Market and beaches) with the Myilly Point Precinct.

Tour buses

A dedicated area for set-down and pick-up for groups (tours, school, corporate and interest groups) is allocated, with good proximity to the Parklands, picnicking spaces and Myilly Point Precinct entry/ undercroft.

Drop-off

Drop is accessed from Lambell Terrace and integrates with carpark movement (and landscaped forecourt on the Mitchell street axis).

The drop-off serves for taxis and private use, with taxi queuing and passing lanes.

Carparking

300+ carparks are included for on and immediately adjacent the site. A strategy to shade all carparking is integrated in proposed solutions.

On-street parking along Lambell Terrace is largely retained and proposed to be landscape-enhanced by additional shade tree planting.

An underground carpark is shown in the conceptual site plans, beneath an area free of tall shade trees – the open lawned portion of the site's Parklands, and, to obviate terrorism potential, not beneath the Myilly Point Precinct. This option will be expensive to construct – and operate with requirements for mechanical ventilation, lighting and de-watering.

Although proximate to primary site elements, the illustrated underground carpark seems an awkward fit with a Parklands destination – and will require risers for users and air that may congest the Myilly Point Precinct entry experience and undercroft breezeway, and introduce unwanted noise.

An alternative, lower cost option is indicated in the Site Dynamics Diagrams. This carpark could be extended from Lambell Terrace as an at-grade on-site parking area (shaded by landscape), eventually morphing into readily naturally-venting undercroft parking (beneath the 'Sunset Promenade', and utilising favourable natural site falls.

Lambell Terrace and at-grade carparking in the alternative option links to picnicking areas and Kahlin Compound Memorial Grounds.

Dedicated staff carparking is separated from public parking.

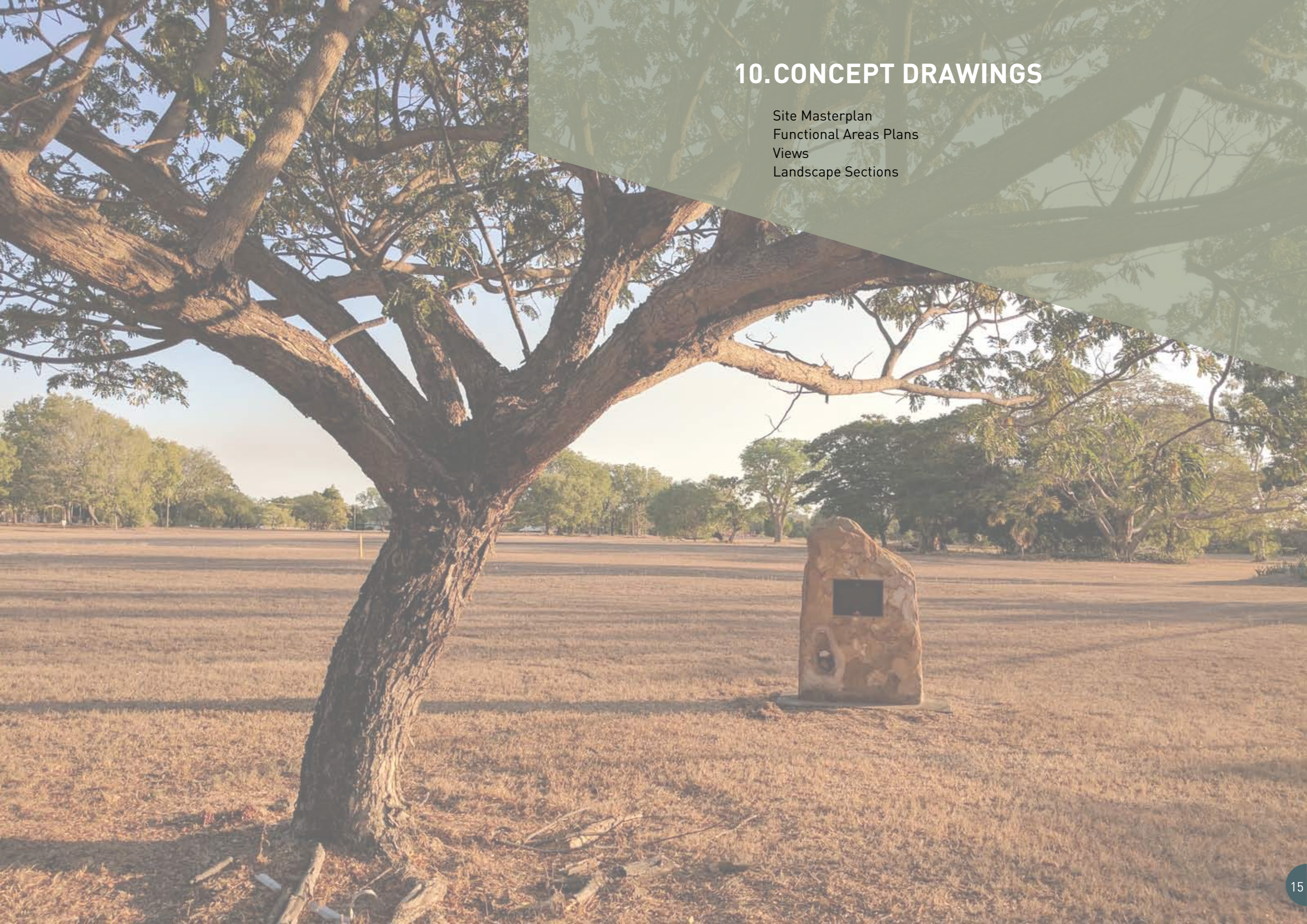
Service access

Service access to Back-of-House and plant areas is separated from drop-off and carparking access. Loading bays are integrated and pantechicon vehicle manoeuvrability is allowed for.

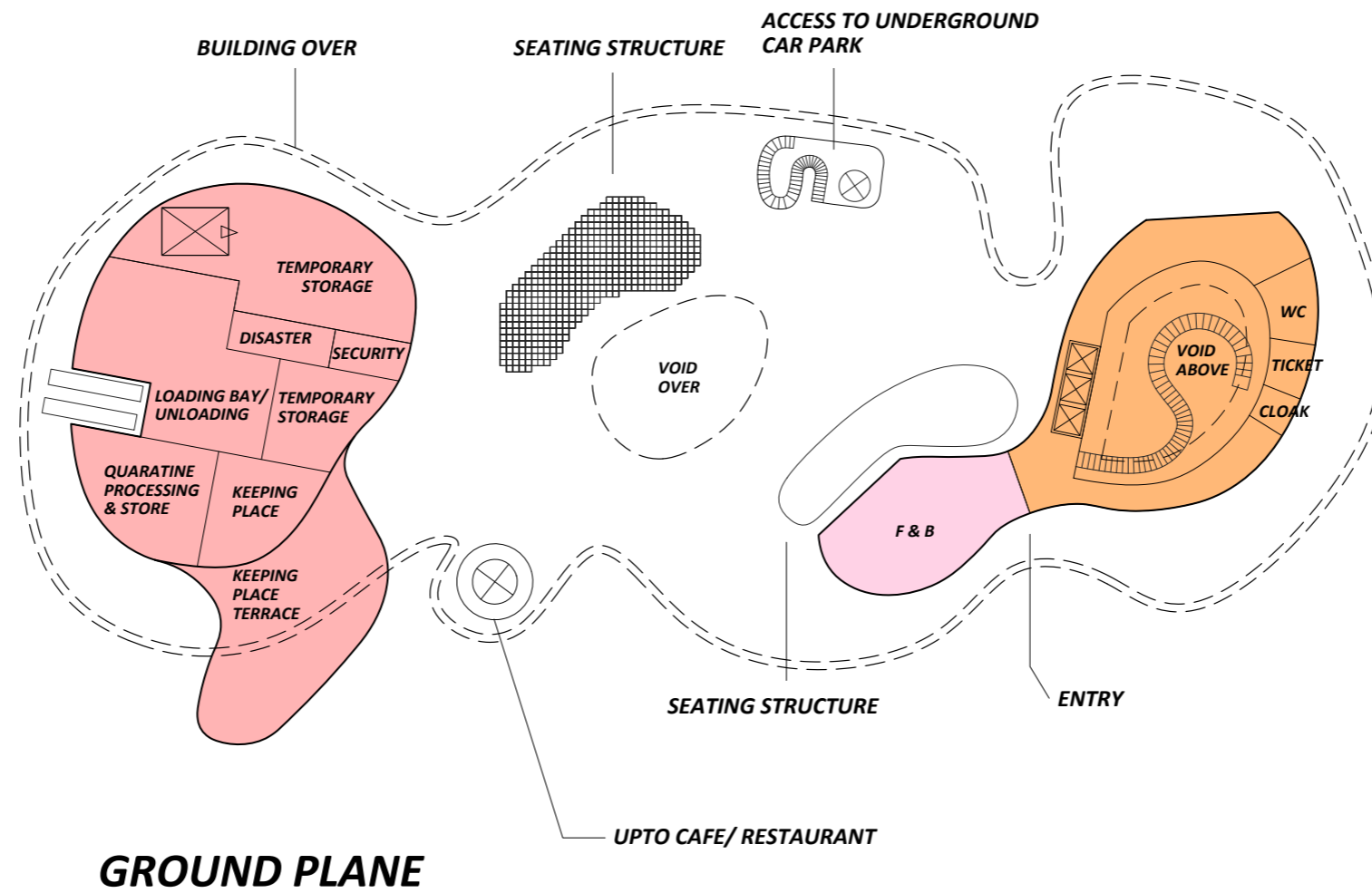
A service road from Kahlin Avenue services Exhibition Back-of-House and plant areas and potential Research/ Education areas. A staff carpark also branches off this access. Temira Crescent (Lambell Terrace end) serves other service and landscape management areas.

10. CONCEPT DRAWINGS

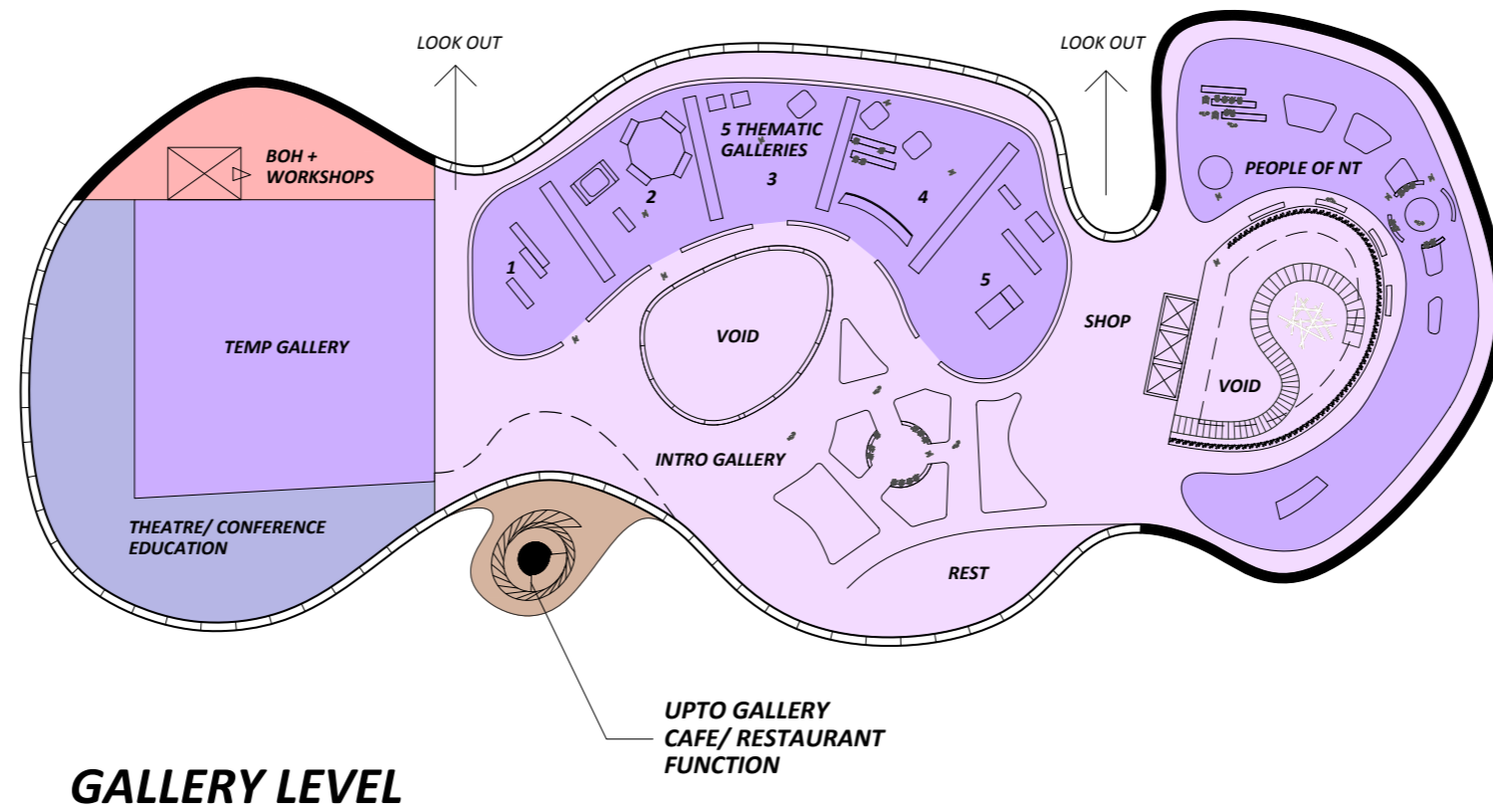
Site Masterplan
Functional Areas Plans
Views
Landscape Sections

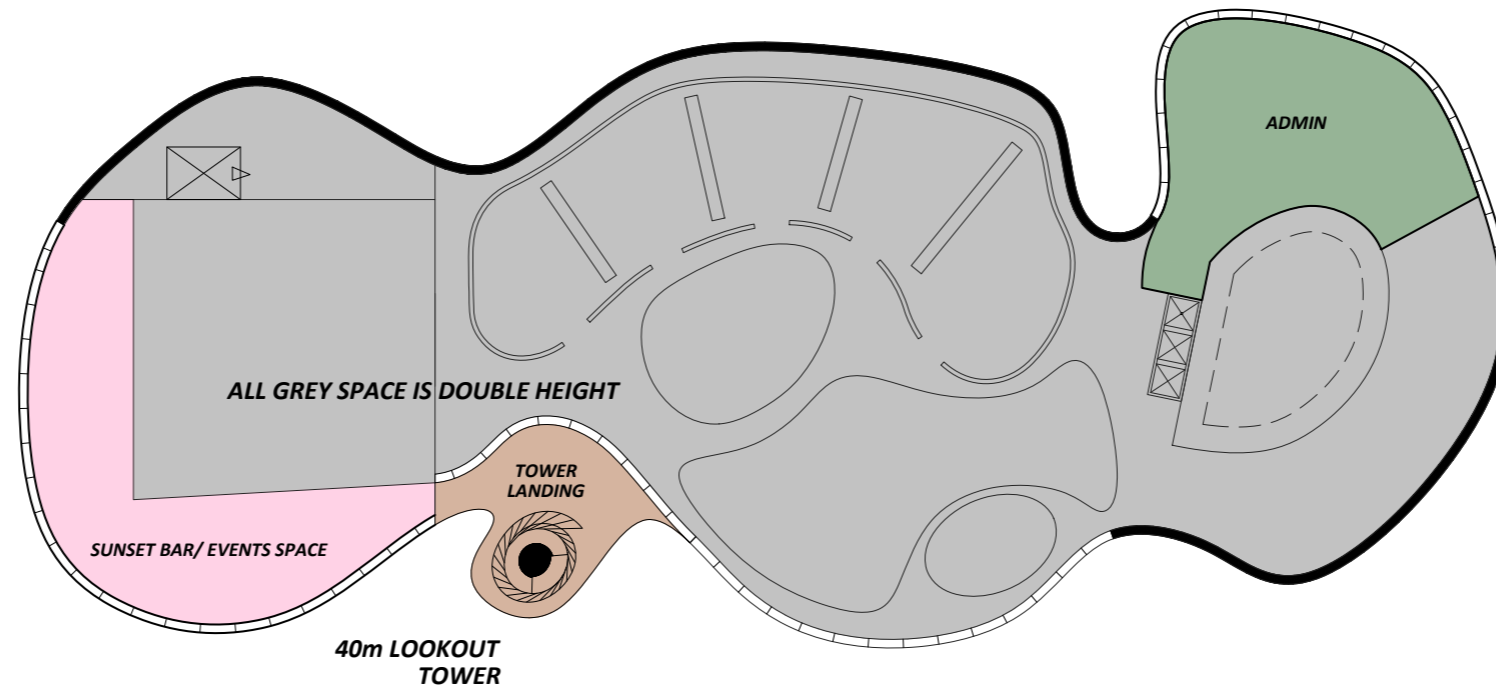






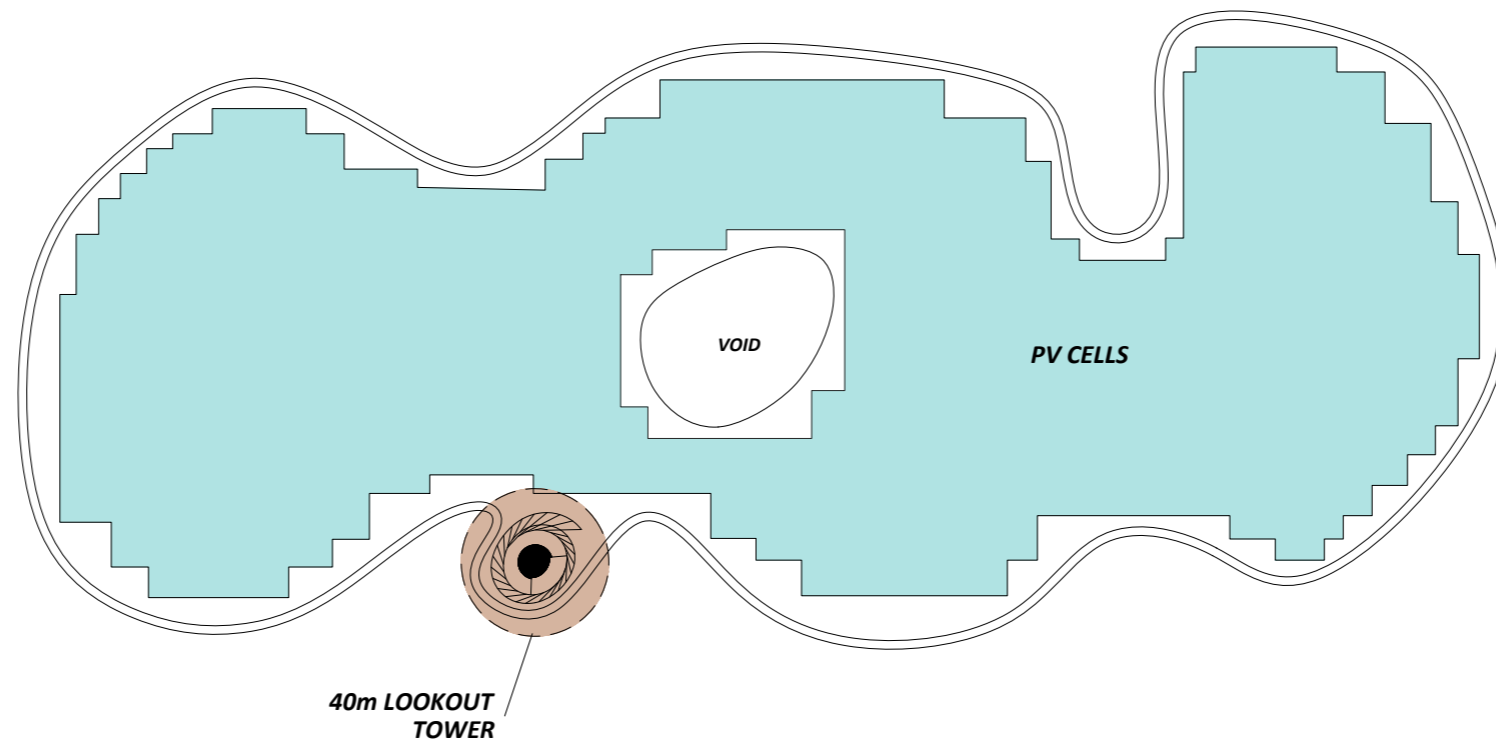
- KEY**
- GALLERY SPACE
 - RETAIL AMENITIES
 - PUBLIC AMENITY
 - BACK OF HOUSE
 - THEATRE/ CONFERENCE
 - ADMINISTRATION
 - SOLAR PANELS
 - LOOKOUT TOWER



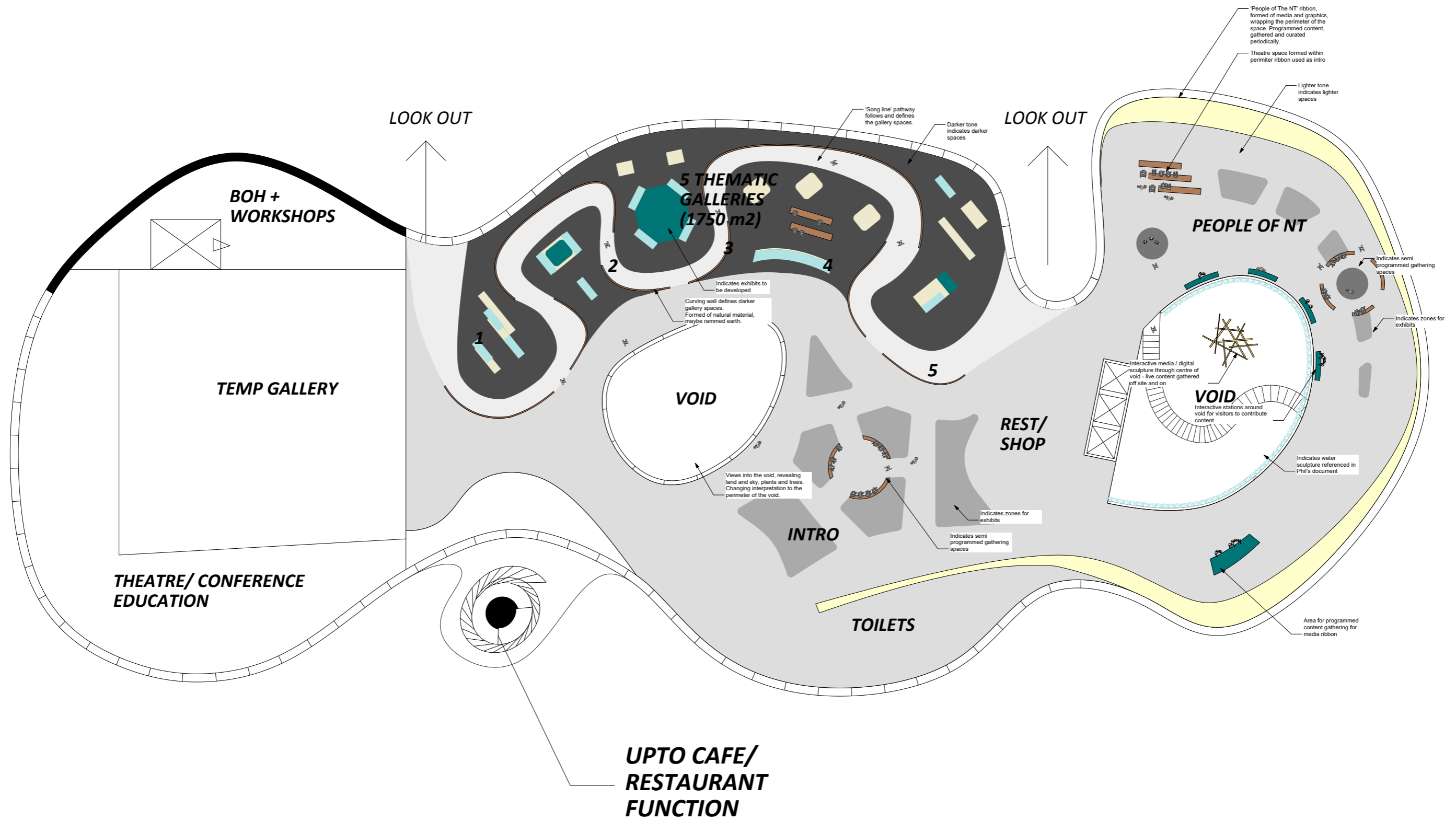


- KEY**
- GALLERY SPACE
 - RETAIL AMENITIES
 - PUBLIC AMENITY
 - BACK OF HOUSE
 - THEATRE/ CONFERENCE
 - ADMINISTRATION
 - SOLAR PANELS
 - LOOKOUT TOWER

MEZZANINE & SUNSET BAR



ROOF LEVEL







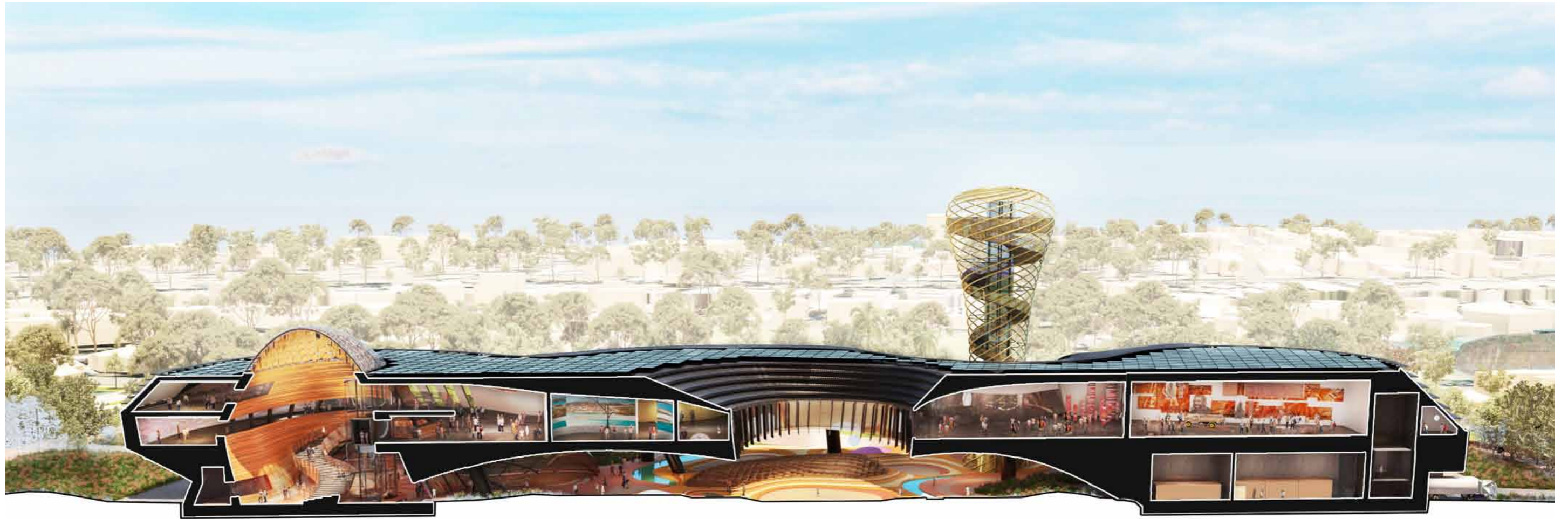






















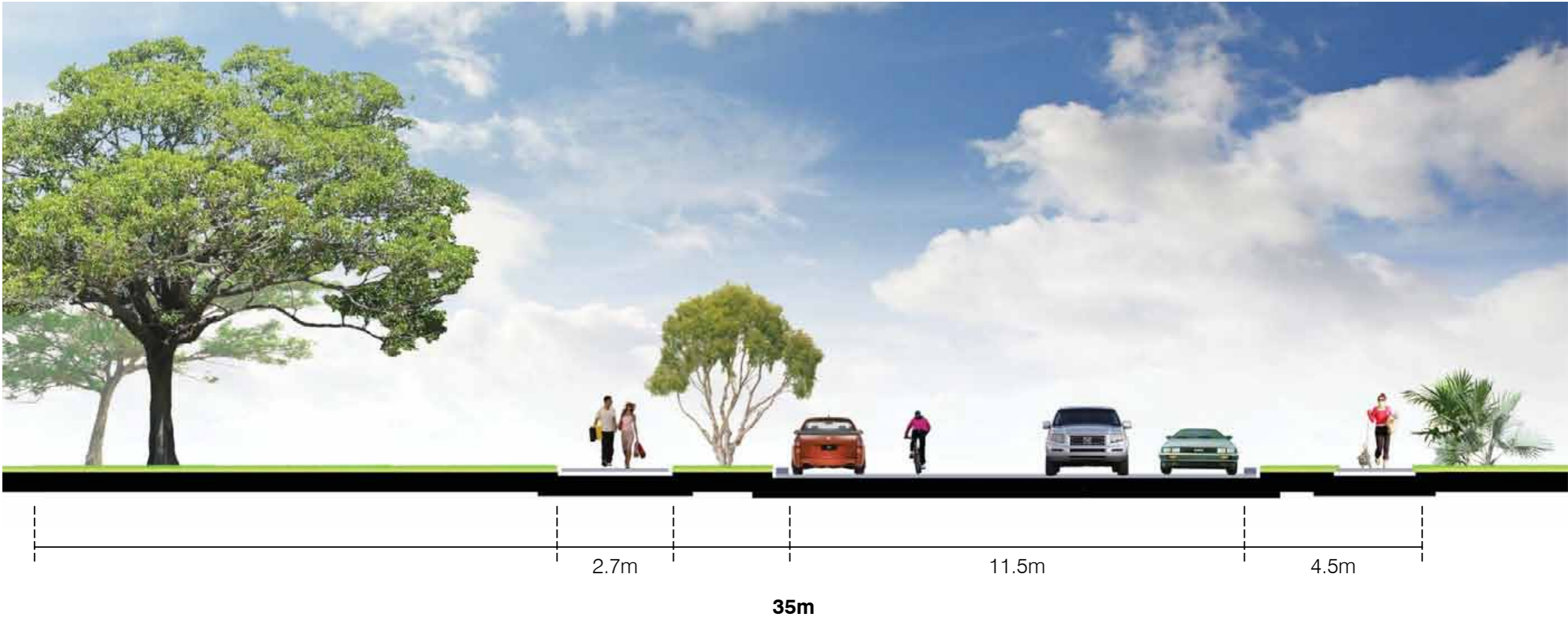




LANDSCAPE PLAN



SMITH STREET SECTION - EXISTING



SMITH STREET SECTION - PROPOSED

